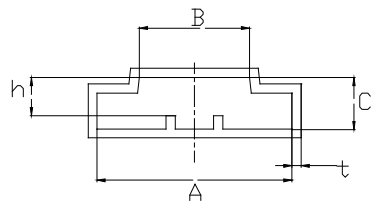




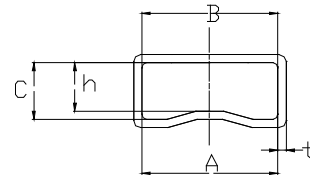
IC Shipping Tube Products Catalog

TUBE PRODUCTS

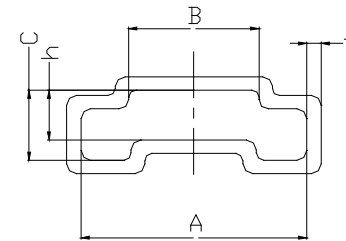
- ePAK features a full line of tubes for all applications
- End pins, plugs and stoppers
- Comprehensive in-house design and custom manufacturing of tube designs for standard as well as specialty products
- Contact ePAK to discuss your tube requirements today



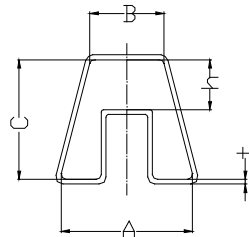
SOIC



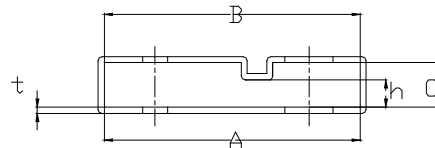
SOIC



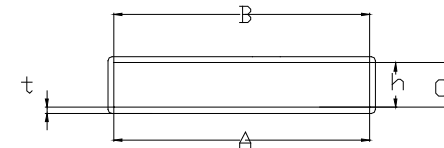
SOIC



PDIP



TO-220



PLCC

TUBE Dimension Reference – Common Formats Shown

PDIP

| Package | ePAK P/N | A | B | C | H | T | L | Pin | Plug | Code |
|------------------------------|----------------------------------|--------|--------|--------|-------|-------|-----|-----|------|---------|
| PDIP 300 MIL | CPS PDIP 300MIL STD TUBE | 15.240 | 8.255 | 13.462 | 5.207 | 0.508 | 508 | X | | eTU0001 |
| PDIP 300 MIL | DAEWOO PDIP300MIL TUBE | 15.240 | 8.250 | 13.450 | 5.200 | 0.510 | 508 | X | | eTU0012 |
| PDIP 300 MIL | FAIRCHILD PDIP 300MIL TUBE | 12.900 | 9.000 | 11.100 | 4.200 | 0.500 | 500 | X | | eTU0013 |
| PDIP 300 MIL | 300MILS PDIP TUBE | 12.450 | 9.650 | 10.800 | 4.320 | 0.500 | 508 | X | | eTU0111 |
| PDIP 300 MIL | 3CP29320 TUBE | 15.200 | 8.400 | 11.200 | 4.300 | 0.500 | 532 | X | | eTU0015 |
| PDIP 300 MILS (HIGH PROFILE) | 300MILS PDIP (High Profile) TUBE | 14.220 | 7.366 | 11.940 | 5.160 | 0.500 | 508 | X | | eTU0116 |
| PDIP 600 MIL | 600MILS PDIP TUBE | 19.939 | 17.270 | 10.795 | 5.210 | 0.500 | 508 | X | | eTU0110 |
| PDIP 600 MIL | 600MILS TUBE | 20.900 | 17.400 | 10.300 | 5.000 | 0.800 | 532 | X | | eTU0128 |
| 3CP29320 | 3CP29320 TUBE | 15.200 | 8.400 | 11.200 | 4.300 | 0.500 | 532 | X | | eTU0160 |
| 3CP72696 | 3CP72696 TUBE | 32.40 | 32.40 | 9.50 | 5.50 | 0.75 | 532 | X | | eTU0755 |
| 7VCA35BY | 7VCA35BY TUBE | 26.000 | 26.000 | 10.000 | 5.800 | 0.700 | 552 | | X | eTU0034 |
| 7VC617 CY | 7VC617 CY TUBE | 20.0 | 20.0 | 10.8 | 5.3 | 0.5 | 590 | | X | eTU0211 |
| 7VC772DY | 7VC772DY TUBE | 24.000 | 24.000 | 6.800 | 4.700 | 0.500 | 590 | | X | eTU0033 |
| TSRW19ES | TSRW19ES TUBE | 15.72 | 15.72 | 24.70 | 16.76 | 0.80 | 506 | | X | eTU0378 |
| ADI-0098-04 | ADI-0098-04 TUBE | 21.34 | 17.15 | 13.97 | 5.46 | 0.76 | 508 | | | eTU0383 |
| DIP400 | DIP400 TUBE | 13.80 | 13.80 | 10.50 | 4.20 | 0.60 | 520 | | X | eTU0390 |
| MC-K-0008 | MC-K-0008 TUBE | 12.00 | 8.00 | 11.00 | 4.80 | 0.50 | 500 | | X | eTU0405 |
| 571100000 | 571100000 TUBE | 14.00 | 9.00 | 11.00 | 5.00 | 0.50 | 516 | | X | eTU0604 |
| 597A00000 | 597A00000 TUBE | 13.92 | 8.90 | 13.50 | 4.70 | 0.64 | 516 | | X | eTU0602 |





TUBE TOOLING

SOIC

| Package | ePAK P/N | A | B | C | H | T | L | Pin | Plug | Code |
|-----------------|----------------------|-------|-------|-------|-------|------|--------|-----|------|---------|
| 1 | 0001 TUBE | 12.5 | 12.5 | 7.2 | 4.35 | 0.6 | 508 | | X | eTU0495 |
| 0200-0012-16 | 0200-0012-16 TUBE | 11.43 | 9.27 | 8.38 | 6.22 | 0.61 | 528 | | | eTU0541 |
| 0200-0012-18 | 0200-0012-18 TUBE | 11.43 | 9.27 | 9.53 | 7.37 | 0.61 | 528 | | | eTU0542 |
| 0200-0012-19 | 0200-0012-19 TUBE | 14.22 | 10.03 | 9.14 | 7.11 | 0.6 | 528.07 | | | eTU0516 |
| 070718-1 | 070718-1 TUBE | 22.00 | 22.00 | 14.20 | 9.00 | 0.60 | 522 | X | | eTU0739 |
| 1-912120-0 | 1-912120-0 TUBE | 18.45 | 18.45 | 9.40 | 6.80 | 0.70 | 508 | | X | eTU0600 |
| 10056081-03-001 | 10056081-03-001 TUBE | 29.20 | 29.20 | 13.15 | 5.70 | 0.80 | 610 | | X | eTU0584 |
| 10059380-03-001 | 10059380-03-001 TUBE | 33.80 | 30.80 | 20.30 | 16.25 | 1.00 | 610 | | X | eTU0613 |
| 10059381-03-001 | 10059381-03-001 TUBE | 29.60 | 26.60 | 16.10 | 12.05 | 1.00 | 610 | | X | eTU0612 |
| 10063939-03-001 | 10063939-03-001 TUBE | 30.2 | 30.2 | 18.65 | 11.05 | 0.8 | 609.6 | | X | eTU0640 |
| 10082746-03-001 | 10082746-03-001 TUBE | 25.30 | 25.30 | 20.40 | 11.40 | 0.70 | 610 | | | eTU0751 |
| 1540004-1(2) | 1540004-1(2) TUBE | 28.1 | 28.1 | 12.7 | 7.1 | 0.8 | 250 | | X | eTU0529 |
| 1540040 | 1540040 TUBE | 22.2 | 22.2 | 10 | 8 | 0.6 | 558.8 | | X | eTU0515 |
| 165CFF-009-01 | 165CFF-009-01 TUBE | 7.6 | 7.6 | 6.4 | 5.4 | 0.7 | 600 | | X | eTU0643 |
| 230-0590 | 230-0590 TUBE | 36.32 | 36.32 | 19.05 | 13.97 | 1.27 | 524.51 | | X | eTU0485 |
| 230-0768 | 230-0768 TUBE | 29.46 | 13.08 | 23.37 | 17.78 | 0.76 | 524 | | X | eTU0605 |
| 230-0781 | 230-0781 TUBE | 17.78 | 13.94 | 16.13 | 11.43 | 0.76 | 533 | | | eTU0597 |
| 230-0922 | 230-0922 TUBE | 22.22 | 17.53 | 23.62 | 16.76 | 0.80 | 543 | | X | eTU0599 |
| 291B00000 | 291B00000 TUBE | 25.30 | 15.00 | 14.50 | 7.30 | 0.60 | 578 | | X | eTU0587 |
| 35001248 | 35001248 TUBE | 6.88 | 6.88 | 3.05 | 2.29 | 0.51 | 483 | | X | eTU0559 |
| 3-912120-3 | 3-912120-3 TUBE | 30.00 | 30.00 | 15.30 | 11.70 | 0.70 | 508 | | X | eTU0752 |
| 3-912120-4 | 3-912120-4 TUBE | 17.35 | 17.35 | 12.8 | 8 | 0.7 | 508 | | X | eTU0637 |



SOIC (continued)

| Package | ePAK P/N | A | B | C | H | T | L | Pin | Plug | Code |
|------------------|-----------------------|-------|-------|-------|-------|------|-----|-----|------|---------|
| 3M-900194-6 | 3M-900194-6 TUBE | 8.40 | 8.40 | 7.60 | 3.50 | 0.80 | 520 | | X | eTU0746 |
| 3S-030170-5 | 3S-030170-5 TUBE | 20.5 | 20.5 | 9.5 | 3.5 | 0.75 | 720 | X | | eTU0521 |
| 3S-070221-3 | 3S-070221-3 TUBE | 21.40 | 21.40 | 12.40 | 2.60 | 0.80 | 570 | X | | eTU0741 |
| 48-005(2) | 48-005(2) TUBE | 9 | 9 | 10.2 | 6.9 | 0.5 | 250 | | X | eTU0527 |
| 48-010 | 48-010 TUBE | 19.48 | 19.48 | 7.75 | 6.2 | 0.76 | 600 | | | eTU0396 |
| 48-011 | 48-011 TUBE | 10 | 10 | 9.6 | 5.6 | 0.5 | 600 | | X | eTU0399 |
| 48-012 | 48-012 TUBE | 5.2 | 3.3 | 10.5 | 10.5 | 0.5 | 450 | | X | eTU0449 |
| 483401000 | 483401000 TUBE | 11.00 | 11.00 | 13.00 | 8.50 | 0.50 | 553 | | X | eTU0578 |
| 4-912072-2 | 4-912072-2 TUBE | 33 | 33 | 32 | 26.8 | 0.8 | 508 | | X | eTU0522 |
| 527 | 527 TUBE | 19.40 | 19.40 | 10.50 | 6.30 | 0.50 | 544 | | | eTU0672 |
| 549 | 549 TUBE | 33.20 | 33.20 | 11.50 | 4.70 | 0.80 | 502 | | | eTU0685 |
| 5-912077-8 | 5-912077-8 TUBE | 20.2 | 20.2 | 10.6 | 2.6 | 0.7 | 540 | | X | eTU0483 |
| 5-912107-8 | 5-912107-8 TUBE | 18.29 | 18.29 | 15.85 | 11.45 | 0.6 | 508 | | X | eTU0498 |
| 5-912107-9 | 5-912107-9 TUBE | 23.29 | 23.29 | 9.95 | 7.35 | 0.70 | 508 | | X | eTU0554 |
| 598A00000 | 598A00000 TUBE | 13.70 | 9.00 | 16.60 | 10.20 | 0.64 | 516 | | X | eTU0603 |
| 6232SMT RA STICK | 6232SMT RA STICK TUBE | 8.5 | 8.5 | 4.2 | 1.35 | 0.5 | 510 | | | eTU0500 |
| 6232SMT ST STICK | 6232SMT ST STICK TUBE | 6 | 6 | 6.5 | 3.3 | 0.5 | 510 | | | eTU0499 |
| 6-912107-1 | 6-912107-1 TUBE | 23.29 | 23.29 | 13.7 | 11.1 | 0.7 | 508 | | X | eTU0479 |
| 7099-0002-001 | 7099-0002-001 TUBE | 5.50 | 5.50 | 9.20 | 4.80 | 0.60 | 555 | | X | eTU0557 |
| 7-912107-1 | 7-912107-1 TUBE | 9.3 | 9.3 | 23.5 | 20.8 | 0.7 | 508 | | X | eTU0420 |
| 7-912107-5 | 7-912107-5 TUBE | 13.7 | 13.7 | 23.29 | 18.29 | 0.7 | 508 | | X | eTU0401 |
| 7-912107-6 | 7-912107-6 TUBE | 20.79 | 20.79 | 19.6 | 15.2 | 0.6 | 508 | | X | eTU0497 |
| 7VCD41B-K | 7VCD41B-K TUBE | 10.3 | 10.3 | 9.3 | 4.35 | 0.5 | 515 | X | | eTU0547 |



TUBE TOOLING

SOIC (continued)

| Package | ePAK P/N | A | B | C | H | T | L | Pin | Plug | Code |
|---------------------|--------------------------|-------|-------|-------|-------|------|-----|-----|------|---------|
| 912120-2 | 912120-2 TUBE | 28 | 28 | 18.5 | 15.7 | 0.9 | 508 | | X | eTU0536 |
| 912120-4 | 912120-4 TUBE | 17.80 | 17.80 | 16.40 | 12.90 | 0.70 | 508 | | X | eTU0574 |
| 912120-5 | 9-12120-5 TUBE | 18.45 | 18.45 | 12.70 | 10.10 | 0.70 | 508 | | X | eTU0575 |
| 912120-8 | 912120-8 TUBE | 25.70 | 25.70 | 12.70 | 7.90 | 0.80 | 508 | | X | eTU0611 |
| 95 9300 8079 10 195 | 95 9300 8079 10 195 TUBE | 22.9 | 22.9 | 17.4 | 15.8 | 0.7 | 610 | | | eTU0645 |
| 95 9300 8079 10 196 | 95 9300 8079 10 196 TUBE | 18.4 | 18.4 | 12 | 9.4 | 0.7 | 610 | | | eTU0644 |
| 99-0221-04(2) | 99-0221-04(2) TUBE | 15.4 | 15.4 | 8.2 | 5.5 | 0.8 | 250 | | X | eTU0528 |
| 99-0327-01 | 99-0327-01 TUBE | 12.80 | 12.80 | 8.00 | 5.30 | 0.70 | 430 | | X | eTU0589 |
| 99-0375-01 | 99-0375-01 TUBE | 19.80 | 15.50 | 8.40 | 5.20 | 0.70 | 414 | | X | eTU0607 |
| 99-0383-02 | 99-0383-02 TUBE | 11.80 | 11.80 | 6.40 | 4.40 | 0.60 | 520 | | X | eTU0590 |
| 99-0432-01 | 99-0432-01 TUBE | 6.60 | 6.60 | 11.50 | 7.15 | 0.70 | 610 | | X | eTU0591 |
| 99-0563-01 | 99-0563-01 TUBE | 12.00 | 11.80 | 6.40 | 4.40 | 0.60 | 520 | | | eTU0601 |
| 99-0749-01 | 99-0749-01 TUBE | 6.80 | 6.80 | 13.00 | 8.60 | 0.60 | 610 | | | eTU0558 |
| 99-0749-01 | 99-0749-01 PS TUBE | 13 | 13 | 6.8 | 6 | 0.6 | 610 | | X | eTU0641 |
| 9-912107-0 | 9-912107-0 TUBE | 49.5 | 49.5 | 29 | 17 | 1 | 508 | | X | eTU0477 |
| 9-912107-1 | 9-912107-1 TUBE | 51.4 | 51.4 | 42.4 | 30.4 | 1 | 508 | | X | eTU0478 |
| 9-912107-3 | 9-912107-3 TUBE | 14.3 | 12 | 19.7 | 19.7 | 0.8 | 508 | | X | eTU0441 |
| 9-912107-4 | 9-912107-4 TUBE | 27.6 | 24.6 | 23.1 | 16.6 | 0.8 | 508 | | X | eTU0440 |
| 9-912107-7 | 9-912107-7 TUBE | 30 | 30 | 24 | 12.55 | 0.8 | 508 | | X | eTU0471 |
| 9-912107-8 | 9-912107-8 TUBE | 18.4 | 18.4 | 15 | 13.1 | 0.8 | 508 | | X | eTU0535 |



SOIC (continued)

| Package | ePAK P/N | A | B | C | H | T | L | Pin | Plug | Code |
|------------------|-----------------------|-------|-------|------|------|------|-----|-----|------|---------|
| 99-7-H012-000 | 99-7-H012-000 TUBE | 15.40 | 15.40 | 8.20 | 5.50 | 0.80 | 414 | | X | eTU0580 |
| 99-7-H013-000 | 99-7-H013-000 TUBE | 18.80 | 18.80 | 8.40 | 4.50 | 0.70 | 414 | | X | eTU0581 |
| 99-7-H014-000 | 99-7-H014-000 TUBE | 10.80 | 10.80 | 6.40 | 4.40 | 0.60 | 508 | | X | eTU0582 |
| 99-7-H018-000 | 99-7-H018-000 TUBE | 13.00 | 8.60 | 6.80 | 6.00 | 0.60 | 610 | | X | eTU0606 |
| 99-7-H021-000 | 99-7-H021-000 PS TUBE | 17.00 | 17.00 | 8.60 | 8.20 | 0.70 | 425 | | X | eTU0686 |
| A00112 | A00112 TUBE | 7.00 | 7.00 | 5.20 | 4.40 | 0.60 | 600 | | | eTU0744 |
| AD-016-04A | AD-016-04A TUBE | 27.3 | 27.3 | 14.3 | 3.2 | 0.8 | 500 | | X | eTU0472 |
| ADI-0098-12 | ADI-0098-12 TUBE | 13.10 | 7.87 | 3.70 | 2.79 | 0.69 | 508 | | X | eTU0564 |
| ADI-0098-22 | ADI-0098-22 TUBE | 5.16 | 3.58 | 1.35 | 1.02 | 0.46 | 173 | | | eTU0384 |
| ADI-0098-23 | ADI-0098-23 TUBE | 6.81 | 6.81 | 2.03 | 1.14 | 0.5 | 509 | | | eTU0385 |
| ADI-0098-24 | ADI-0098-24 TUBE | 9.4 | 5.4 | 2.8 | 2 | 0.6 | 508 | | | eTU0386 |
| CSS5011-1902LSZ | SYSTEM CONNECTOR TUBE | 12.90 | 12.90 | 8.20 | 5.60 | 0.60 | 600 | | X | eTU0621 |
| DE3761544401 | DE3761544401 TUBE | 31.1 | 2.4 | 29.4 | 19 | 0.8 | 570 | | | eTU0481 |
| DE3761545801 | DE3761545801 TUBE | 32.9 | 2.5 | 33.8 | 19.8 | 0.8 | 570 | | | eTU0480 |
| FJEXAI0001 | FJEXAI0001 TUBE | 17.1 | 17.1 | 19.8 | 15.2 | 0.6 | 496 | | X | eTU0484 |
| IDJ-B27.B32-F6T | IDJ-B27.B32-F6T TUBE | 14.7 | 12 | 9.3 | 6.8 | 0.7 | 625 | | X | eTU0398 |
| IDJ-D14.21.23-6T | IDJ-D14.21.23-6T TUBE | 12.3 | 12.3 | 13.7 | 10.4 | 0.7 | 590 | | X | eTU0382 |
| ITJS-03 | ITJS-03 TUBE | 15 | 11.5 | 9.4 | 6 | 0.7 | 625 | | X | eTU0400 |



SOIC (continued)

| Package | ePAK P/N | A | B | C | H | T | L | Pin | Plug | Code |
|----------------|---------------------|-------|-------|-------|------|------|-----|-----|------|---------|
| K-F006 | K-F006 TUBE | 4.40 | 4.40 | 5.20 | 3.20 | 0.50 | 229 | | | eTU0728 |
| LV-1 | LV-1 TUBE | 7.95 | 7.95 | 5.24 | 3.24 | 0.55 | 570 | | X | eTU0474 |
| MC-48LCC/AS | MC-48LCC/AS TUBE | 15.32 | 15.32 | 4.95 | 3.43 | 0.51 | 503 | | X | eTU0540 |
| M-CD-001 | M-CD-001 TUBE | 25.3 | 15 | 14.5 | 7.3 | 0.6 | 578 | | X | eTU0537 |
| M-CD-002 | M-CD-002 TUBE | 13.4 | 13.4 | 14 | 10.5 | 0.5 | 553 | | X | eTU0538 |
| M-CD-003 | M-CD-003 TUBE | 11 | 11 | 13 | 8.5 | 0.5 | 553 | | X | eTU0539 |
| MC-K-0005 | MC-K-0005 TUBE | 13 | 13 | 12 | 8 | 0.50 | 490 | | X | eTU0671 |
| MC-K-0008 | MC-K-0008 TUBE | 12 | 8.5 | 6 | 4 | 0.5 | 500 | | X | eTU0328 |
| MC-K-0009 | MC-K-0009 TUBE | 12 | 8 | 6.5 | 4.8 | 0.5 | 500 | | X | eTU0406 |
| MC-K-0010 | MC-K-0010 TUBE | 11 | 7 | 8.5 | 4 | 0.5 | 500 | | X | eTU0407 |
| MC-K-0013 | MC-K-0013 TUBE | 11 | 8 | 5 | 4 | 0.5 | 500 | | X | eTU0530 |
| MC-K-0014 | MC-K-0014 TUBE | 13 | 13 | 6.5 | 4.4 | 0.6 | 500 | | X | eTU0531 |
| MC-K-0015 | MC-K-0015 TUBE | 9 | 9 | 7.3 | 6.3 | 0.6 | 500 | | X | eTU0532 |
| MC-K-0016 | MC-K-0016 TUBE | 13 | 11 | 13 | 7 | 0.6 | 500 | | X | eTU0551 |
| MC-K-0019 | MC-K-0019 TUBE | 10.00 | 10.00 | 5.10 | 3.60 | 0.60 | 500 | | X | eTU0682 |
| MC-K-0022 | MC-K-0022 TUBE | 10.00 | 10.00 | 3.20 | 1.50 | 0.60 | 500 | | X | eTU0695 |
| MC-K-0027 | MC-K-0027 PS TUBE | 8.00 | 11.00 | 8.50 | 4.50 | 0.50 | 500 | | X | eTU0731 |
| MTL-0405-015 | MTL-0405-015 TUBE | 20.00 | 20.00 | 7.60 | 3.80 | 0.63 | 584 | | X | eTU0586 |
| OKI 64 SDIP(1) | OKI 64 SDIP(1) TUBE | 20.10 | 20.10 | 10.60 | 5.30 | 0.70 | 550 | X | X | eTU0745 |



SOIC (continued)

| Package | ePAK P/N | A | B | C | H | T | L | Pin | Plug | Code |
|----------------------|---------------------------|--------|--------|-------|-------|-------|-----|-----|------|---------|
| P3A476 | P3A476 TUBE | 16.60 | 16.60 | 11.10 | 6.50 | 0.70 | 550 | | X | eTU0733 |
| P3A477 | P3A477 TUBE | 16.60 | 16.60 | 11.10 | 4.50 | 0.70 | 550 | | X | eTU0734 |
| PJK-31 | PJK-31 TUBE | 11.4 | 9.5 | 7.3 | 4.4 | 0.7 | 625 | | | eTU0467 |
| QSJ-44546 | QSJ-44546 TUBE | 12.2 | 6.2 | 5.2 | 4.6 | 0.6 | 495 | | X | eTU0161 |
| SLA-D | SLA-D TUBE | 28.60 | 28.60 | 7.10 | 5.70 | 0.70 | 510 | | X | eTU0749 |
| SOIC 150MILS | 150MILS SOIC TUBE | 6.6 | 6.6 | 2.67 | 2.08 | 0.5 | 508 | | X | eTU0112 |
| AKM SOIC 150 MIL STD | AKM SOIC 150 MIL STD TUBE | 0.304 | 0.304 | 0.116 | 0.087 | 0.017 | 20 | | X | eTU0039 |
| SOIC 150MILS | ATMEL SOIC150MIL TUBE | 6.604 | 6.604 | 2.51 | 1.905 | 0.635 | 508 | | X | eTU0025 |
| SOIC 150MILS | CPS SOIC 150MIL STD TUBE | 18.466 | 18.466 | 2.946 | 2.215 | 0.432 | 508 | | X | eTU0002 |
| SOIC 208MILS | ATMEL SJ SOIC208MIL TUBE | 9.398 | 5.41 | 2.997 | 2.159 | 0.559 | 530 | | X | eTU0010 |
| SOIC 300MIL STD | SOIC 300MIL STD TUBE | 13.46 | 7.87 | 3.56 | 2.49 | 0.64 | 508 | | X | eTU0335 |
| SRW12ES | SRW12ES TUBE | 13 | 13 | 15 | 10 | 0.6 | 505 | | X | eTU0519 |
| SRW16EE | SRW16EE TUBE | 24 | 11.3 | 20.4 | 14.5 | 0.75 | 480 | | | eTU0427 |
| SRW16ES-03 | SRW16ES-03 TUBE | 16 | 16 | 21.5 | 16 | 0.7 | 477 | | X | eTU0428 |
| THM1050H-32P | THM1050H-32P TUBE | 19.00 | 19.00 | 12.60 | 6.60 | 0.50 | 475 | | X | eTU0691 |
| XA10E4-01 | XA10E4-01 TUBE | 16.10 | 11.90 | 10.40 | 6.70 | 0.70 | 510 | | X | eTU0598 |



TO-220

| Package | ePAK P/N | A | B | C | H | T | L | Pin | Plug | Code |
|-------------|-------------------------|--------|--------|-------|-------|-------|-----|-----|------|---------|
| 245-0277160 | 245-0277160 TUBE | 22.60 | 22.60 | 4.80 | 3.00 | 0.80 | 509 | | X | eTU0673 |
| 245-0277910 | 245-0277910 TUBE | 23.36 | 23.36 | 5.96 | 2.06 | 0.90 | 497 | | | eTU0681 |
| 245-0277970 | 245-0277970 TUBE | 22.40 | 22.40 | 5.60 | 4.05 | 0.80 | 513 | | | eTU0680 |
| 2PM0014Z | 2PM0014Z TUBE | 24.40 | 24.40 | 13.40 | 5.10 | 0.80 | 532 | X | | eTU0788 |
| 3CP71911 | 3CP71911 TUBE | 18.700 | 18.700 | 2.700 | 1.400 | 0.650 | 480 | X | | eTU0140 |
| 3CP71322 | 3CP71322 TUBE | 31.400 | 31.400 | 5.500 | 3.400 | 0.750 | 532 | | X | eTU0017 |
| 3CP90127 | 3CP90127 tube | 32.10 | 32.10 | 17.00 | 5.15 | 1.00 | 532 | x | | eTU0840 |
| 3CP90181 | 3CP90181 TUBE | 37.50 | 21.70 | 10.00 | 6.00 | 0.90 | 532 | X | | eTU0816 |
| 3CP91325 | 3CP91325 TUBE | 31.40 | 16.20 | 5.00 | 5.00 | 0.75 | 532 | x | | eTU0815 |
| 3S-050271-1 | 3S-050271-1 TUBE | 26.40 | 26.40 | 5.40 | 3.40 | 0.80 | 710 | X | | eTU0634 |
| 3S-970303-2 | 3S-970303-2 TUBE | 36.900 | 36.900 | 6.000 | 4.200 | 0.600 | 640 | | X | eTU0005 |
| 3S-980043-2 | D5SB 3S-980043-2 TUBE | 32.6 | 32.6 | 5.8 | 3.9 | 0.7 | 640 | X | | eTR0212 |
| OY-MGN | OY-MGN TUBE | 30.00 | 30.00 | 3.00 | 1.50 | 0.70 | 260 | | | eTU0742 |
| TO220FN | TO220FN ANTISTATIC TUBE | 36.000 | 36.000 | 5.500 | 2.700 | 0.700 | 550 | | X | eTU0023 |
| TO220FS | TO220FS TUBE | 32.60 | 17.70 | 13.90 | 5.70 | 0.90 | 532 | X | | eTU0804 |
| TO-220 | TO-220 TUBE | 31.400 | 31.400 | 5.500 | 3.400 | 0.750 | 527 | X | | eTU0142 |
| FM-20L | FM-20L TUBE | 28.40 | 28.40 | 16.70 | 4.80 | 0.80 | 530 | | x | eTU0821 |





TUBE TOOLING

RELAY

| Package | ePAK P/N | A | B | C | H | T | L | Pin | Plug | Code |
|------------|-----------------|--------|--------|--------|--------|-------|-----|-----|------|---------|
| PK-0128-04 | PK-0128-04 TUBE | 25.100 | 25.100 | 30.800 | 25.300 | 0.700 | 565 | | X | eTU0104 |
| PK-0105-04 | PK-0105-04 TUBE | 10.800 | 10.800 | 31.000 | 25.800 | 0.600 | 652 | | X | eTU0105 |
| PK-0129-03 | PK-0129-03 TUBE | 22.500 | 22.500 | 21.000 | 16.500 | 0.600 | 380 | | X | eTU0106 |
| PK-0135-03 | PK-0135-03 TUBE | 29.000 | 29.000 | 30.900 | 25.500 | 0.700 | 408 | | X | eTU0107 |

IPACK

| Package | ePAK P/N | A | B | C | H | T | L | Pin | Plug | Code |
|---------|---------------|-------|-------|--------|-------|-------|-----|-----|------|---------|
| I-PACK | 3CP71911 TUBE | 2.700 | 2.700 | 18.700 | 8.600 | 0.650 | 480 | X | | eTU0140 |

DPACK

| Package | ePAK P/N | A | B | C | H | T | L | Pin | Plug | Code |
|-------------------------|-----------------------|--------|--------|--------|--------|-------|-----|-----|------|---------|
| D-PACK | 3CP71288 TUBE | 22.500 | 22.500 | 6.000 | 2.900 | 0.600 | 532 | X | | eTU0016 |
| LS-SC-ST-DRW-003(DPACK) | LS-SC-ST-DRW-003 TUBE | 8.600 | | 28.000 | 14.200 | 0.800 | 520 | X | | eTU0089 |
| 3CP71889 | 3CP71889TUBE | 32.400 | 32.400 | 9.500 | 5.500 | 0.750 | 532 | X | | eTU0148 |



PLCC

| Package | ePAK P/N | A | B | C | H | T | L | Pin | Plug | Code |
|-----------------|----------------------|--------|--------|-------|-------|-------|-----|-----|------|---------|
| D000511 | D000511 TUBE | 1.800 | 1.800 | 8.600 | 8.600 | 0.700 | 546 | X | X | eTU0097 |
| PLCC | 3CP 90128 TUBE | 13.300 | 13.300 | 4.900 | 4.900 | 0.900 | 532 | | X | eTU0129 |
| 10041857-03-002 | 10041857-03-002 TUBE | 38.60 | 38.60 | 25.40 | 19.50 | 1.00 | 610 | | X | eTU0412 |
| 10041857-03-003 | 10041857-03-003 TUBE | 30.20 | 30.20 | 17.00 | 11.10 | 0.80 | 610 | | X | eTU0414 |
| 10041857-03-001 | 10041857-03-001 TUBE | 34.40 | 34.40 | 20.40 | 15.40 | 0.80 | 610 | | X | eTU0418 |
| 9-912107-2 | 9-912107-2 TUBE | 16.80 | 16.80 | 25.00 | 6.30 | 0.80 | 575 | | X | eTU0432 |
| TU96163 | TU96163 TUBE | 71.00 | 71.00 | 16.00 | 12.00 | 1.20 | 250 | | | eTU0435 |
| CIT12-C1 | CIT12-C2 TUBE | 16.45 | 13.95 | 13.50 | 13.50 | 0.63 | 508 | | X | eTU0460 |
| 67261 | 67261 TUBE | 9.40 | 6.90 | 3.80 | 3.80 | 0.50 | 600 | | X | eTU0461 |
| N02 | N02 TUBE | 10.90 | 10.90 | 1.78 | 1.78 | 0.70 | 615 | | X | eTU0592 |
| 230-0376 | 230-0376 TUBE | 13.34 | 13.34 | 9.40 | 9.40 | 1.00 | 260 | | | eTU0646 |
| 3322 200 9403 | 3322 200 9403 TUBE | 18.30 | 18.30 | 5.30 | 3.50 | 0.90 | 491 | | | eTU0688 |

TSSOP

| Package | ePAK P/N | A | B | C | H | T | L | Pin | Plug | Code |
|---------------|---------------|-------|-------|-------|-------|-------|-----|-----|------|---------|
| TSSOP 8/14/16 | 3CP60316 TUBE | 6.600 | 6.600 | 2.600 | 1.900 | 0.600 | 532 | | X | eTU0018 |





TUBE TOOLING

CRYSTAL

| Package | ePAK P/N | A | B | C | H | T | L | Pin | Plug | Code |
|----------------|---------------------|--------|--------|--------|--------|-------|-------|-----|------|---------|
| 3S-9410189 | 3S-9410189 TUBE | 13.000 | 13.000 | 10.500 | 3.000 | 0.500 | 520 | | X | eTU0004 |
| 950146 | 950146 TUBE | 16.000 | 16.000 | 8.700 | N/A | 6.000 | 565 | | X | eTU0006 |
| G5V-2 | G5V-2 TUBE | 10.500 | 10.500 | 13.000 | 10.000 | 0.640 | 530 | | X | eTU0008 |
| 950215 | 950215 TUBE | 5.250 | 5.250 | 2.500 | N/A | 0.500 | 600 | | X | eTU0011 |
| 03M-000025-1 | 03M-000025-1 TUBE | 42.000 | 42.000 | 7.600 | 5.500 | 1.200 | 680 | | X | eTU0019 |
| 950174-001 | 950174-001 TUBE | 5.250 | 5.250 | 3.500 | N/A | 0.500 | 600 | | X | eTU0024 |
| 10P FPC | 10P FPC TUBE | 7.900 | 7.900 | 9.800 | 6.800 | 0.600 | 600 | | X | eTU0029 |
| 165CGP-003-01 | 165CGP-003-01 TUBE | 10.600 | 10.600 | 10.100 | 6.200 | 0.800 | 600 | | X | eTU0036 |
| HOSONIC | HOSONIC TUBE | 11.400 | 14.500 | 16.800 | 9.700 | 0.600 | 516 | | X | eTU0069 |
| 301-324-8 | 301-324-8 TUBE | 13.970 | 13.970 | 22.733 | 14.910 | 0.635 | 520.7 | X | | eTU0073 |
| HOSONIC(2) | HOSONIC(2) TUBE | 9.000 | 10.900 | 12.000 | 5.800 | 0.600 | 518 | | X | eTU0138 |
| SC003 MA05 | SC003 MA05 TUBE | 5.600 | 5.600 | 33.200 | 16.200 | 0.800 | 520 | | X | eTU0139 |
| G5V-1 | G5V-1 TUBE | 8.300 | 8.300 | 15.000 | 10.450 | 0.500 | 520 | | X | eTU0143 |
| G5V-11 | G5v-11TUBE | 8.300 | 8.300 | 15.000 | 15.000 | 0.500 | 640 | | X | eTU0144 |
| G5V-1F | G5V-1FTUBE | 10.300 | 10.300 | 13.400 | 9.400 | 0.500 | 520 | | X | eTU0145 |
| 950271 | 950271 TUBE | 5.0 | 5.0 | 2.5 | 0.95 | 0.5 | 600 | | X | eTU0247 |
| 99-0221-04 | 99-0221-04 TUBE | 17.00 | 17.00 | 8.20 | 9.40 | 0.80 | 414 | | X | eTU0304 |
| TU01308 | TU01308 TUBE | 7.80 | 7.80 | 8.42 | N/A | 0.64 | 584.2 | | | eTU0307 |
| HSJ1637 | HSJ1637 TUBE | 8.80 | 8.80 | 10.00 | 6.50 | 0.60 | 550 | | X | eTU0336 |
| STICK FOR M5NV | STICK FOR M5NV TUBE | 4.80 | 4.80 | 5.30 | 3.75 | 0.60 | 600 | | X | eTU0340 |





TUBE TOOLING

CRYSTAL (continued)

| | | | | | | | | | | |
|---------------|--------------------|-------|-------|------|------|------|---------|--|---|---------|
| 99-7-H001-000 | 99-7-H001-000 TUBE | 15.40 | 15.40 | 8.20 | 9.40 | 0.80 | 590 | | X | eTU0342 |
| LD03 | LD03 TUBE | 5.00 | 5.00 | 6.20 | N/A | 0.60 | 570 | | X | eTU0388 |
| SOP375-2 | SOP375-2 TUBE | 15.20 | 15.20 | 4.30 | 1.50 | 0.50 | 520 | | X | eTU0391 |
| SOP300 | SOP300 TUBE | 15.20 | 15.20 | 4.30 | 1.20 | 0.50 | 520 | | X | eTU0392 |
| 99-7-H011-000 | 99-7-H011-000 TUBE | 18.60 | 18.60 | 8.20 | 5.20 | 0.80 | 590 | | X | eTU0462 |
| 99-0181-04 | 99-0181-04 TUBE | 18.60 | 18.60 | 8.20 | 5.20 | 0.80 | 414 | | X | eTU0466 |
| 99-0997-01 | 99-0997-01 | 9.90 | 8.50 | 7.30 | 4.40 | 0.60 | 503 | | | eTU0770 |
| LGA0909-4.0 | LGA0909-4.0 | 9.60 | 9.60 | 4.60 | 4.60 | 0.50 | 508&315 | | X | eTU0783 |
| 99-1006-01 | 99-1006-01 | 9.90 | 8.50 | 7.30 | 4.00 | 0.60 | 503 | | | eTU0789 |
| 99-1005-01 | 99-1005-01 | 9.90 | 8.50 | 7.30 | 4.40 | 0.60 | 503 | | | eTU0790 |

SWITCH

| Package | ePAK P/N | A | B | C | H | T | L | Pin | Plug | Code |
|-----------|----------------|--------|--------|--------|-------|-------|-----|-----|------|---------|
| KS-10-001 | KS-10-001 TUBE | 14.300 | 8.200 | 12.500 | 6.500 | 0.500 | 500 | | X | eTU0009 |
| MC-K-0004 | MC-K-0004 TUBE | 11.800 | 10.000 | 9.940 | 4.440 | 0.500 | 500 | | X | eTU0030 |
| MC-K-0002 | MC-K-0002 TUBE | 11.200 | 6.900 | 4.400 | 2.700 | 0.600 | 500 | | X | eTU0031 |
| MCK0006 | MCK0006 TUBE | 12.000 | 8.500 | 7.500 | 5.500 | 0.500 | 500 | | X | eTU0084 |

DIODE

| Package | ePAK P/N | A | B | C | H | T | L | Pin | Plug | Code |
|---------|--------------|-------|-------|--------|-------|-------|-----|-----|------|---------|
| CMD-182 | CMD-182 TUBE | 6.420 | 6.420 | 20.310 | 7.840 | 0.600 | 506 | | | eTU0249 |





TUBE TOOLING

CONNECTOR

| Package | ePAK P/N | A | B | C | H | T | L | Pin | Plug | Code |
|--------------|-------------------|---------|---------|--------|--------|-------|-----|-----|------|---------|
| 083-0001-171 | 083-0001-171 TUBE | 100.000 | 96.500 | 21.400 | 18.900 | 0.800 | 390 | | X | eTU0014 |
| 6-912078-2 | 6-912078-2 TUBE | 18.900 | 18.900 | 15.850 | 11.450 | 0.600 | 508 | | X | eTU0020 |
| 2-912078-1 | 2-912078-1 TUBE | 20.790 | 20.790 | 19.600 | 15.200 | 0.600 | 508 | | X | eTU0021 |
| 2-912078-6 | 2-912078-6 TUBE | 45.600 | 45.600 | 37.200 | 29.900 | 1.000 | 508 | | X | eTU0022 |
| 7-912052-4 | 7-912052-4 TUBE | 10.350 | 10.350 | 28.600 | 22.600 | 0.700 | 500 | | X | eTU0027 |
| 6-912054-9 | 6-912054-9 TUBE | 16.900 | 16.900 | 27.900 | 22.400 | 0.800 | 500 | | X | eTU0028 |
| 081-0003-729 | 081-0003-729 TUBE | 153.160 | 143.090 | 33.020 | 13.840 | 1.270 | 368 | | X | eTU0032 |
| 083-5001-316 | 083-5001-316 TUBE | 18.400 | 18.400 | 17.400 | 25.000 | 0.800 | 605 | | X | eTU0042 |
| 081-0001-945 | 081-0001-945 TUBE | 9.500 | 9.500 | 4.800 | 2.300 | 0.600 | 475 | | X | eTU0043 |
| 081-0001-967 | 081-0001-967 TUBE | 6.300 | 6.300 | 10.000 | 7.200 | 5.000 | 420 | | X | eTU0044 |
| 081-4000-050 | 081-4000-050 TUBE | 16.200 | 16.200 | 23.500 | 11.550 | 0.800 | 605 | | X | eTU0045 |
| 081-5000-050 | 081-5000-050 TUBE | 16.200 | 16.200 | 23.500 | 11.550 | 0.800 | 605 | | X | eTU0046 |
| 080-4001-971 | 080-4001-971 TUBE | 16.400 | 16.400 | 17.400 | 17.400 | 0.800 | 605 | | X | eTU0047 |
| 083-5001-637 | 083-5001-637 TUBE | 18.400 | 18.400 | 11.550 | 26.700 | 0.800 | 610 | | X | eTU0050 |
| 083-0001-728 | 083-0001-728 TUBE | 16.140 | 16.140 | 14.600 | 13.520 | 0.800 | 500 | | X | eTU0051 |
| 083-4001-708 | 083-4001-708 TUBE | 16.200 | 16.200 | 23.500 | 15.550 | 0.800 | 605 | | X | eTU0052 |
| 080-4002-971 | 080-4002-971 TUBE | 16.400 | 16.400 | 35.600 | 17.400 | 0.800 | 605 | | X | eTU0059 |
| 080-5001-971 | 080-5001-971 TUBE | 18.400 | 18.400 | 23.100 | 17.400 | 0.800 | 605 | | X | eTU0060 |
| 083-0002-728 | 083-0002-728 TUBE | 33.000 | 33.000 | 16.520 | 13.020 | 0.800 | 280 | | X | eTU0063 |
| 083-0001-843 | 083-0001-843 TUBE | 100.000 | 97.610 | 16.000 | 10.380 | 1.000 | 390 | | X | eTU0065 |
| 083-5021-816 | 083-5021-816 TUBE | 14.800 | 14.800 | 34.300 | 12.100 | 0.800 | 605 | | X | eTU0070 |



TUBE TOOLING

CONNECTOR (Continued)

| Package | ePAK P/N | A | B | C | H | T | L | Pin | Plug | Code |
|--------------|-------------------|--------|--------|--------|--------|-------|-----|-----|------|---------|
| 083-5001-708 | 083-5001-708 TUBE | 16.200 | 16.200 | 23.500 | 6.600 | 0.800 | 605 | | X | eTU0077 |
| 084-3002-069 | 084-3002-069 TUBE | 10.490 | 10.490 | 15.670 | 15.670 | 0.800 | 525 | | X | eTU0085 |
| 084-3001-069 | 084-3001-069 TUBE | 10.490 | 10.490 | 27.030 | 27.030 | 0.800 | 525 | | X | eTU0086 |
| 080-0002-597 | 080-0002-597 TUBE | 6.500 | 6.500 | 5.300 | 2.300 | 0.700 | 480 | | X | eTU0088 |
| 081-0002-967 | 081-0002-976 TUBE | 6.300 | 6.300 | 10.000 | 7.200 | 0.500 | 420 | | X | eTU0120 |
| 0-912107-1 | 0-912107-1TUBE | 48.100 | 48.100 | 46.700 | 26.700 | 1.000 | 508 | | X | eTU0146 |
| 912107-6 | 912107-6 TUBE | 4.800 | 4.800 | 9.000 | 6.400 | 0.700 | 508 | | X | eTU0189 |
| STA C | STA C TUBE | 18.5 | 18.5 | 8.4 | 4.4 | 0.7 | 580 | | X | eTU0213 |
| 1-912107-4 | 1-912107-4 TUBE | 27.9 | 27.9 | 16.7 | 10.6 | 0.8 | 508 | | X | eTU0217 |
| LD07 | LD07 TUBE | 5.1 | 5.1 | 6.1 | 1.4 | 0.6 | 570 | | X | eTU0218 |
| 623287-1 | 623287-1 TUBE | 5.8 | 5.8 | 7.5 | 6.0 | 0.5 | 508 | | X | eTU0227 |
| 2-912107-8 | 2-912107-8 TUBE | 16.0 | 16.0 | 32.4 | 26.4 | 0.8 | 508 | | X | eTU0238 |
| SSM A | SSM A TUBE | 53.0 | 53.0 | 19.0 | 7.6 | 1.0 | 522 | | X | eTU0240 |
| 3-912107-1 | 3-912107-1 TUBE | 17.1 | 17.1 | 30 | 13.4 | 0.9 | 508 | | X | eTU0243 |
| 3-912107-2 | 3-912107-2 TUBE | 30.2 | 30.2 | 19.6 | 12.5 | 0.9 | 508 | | X | eTU0244 |
| SE A | SE A TUBE | 6.4 | 6.4 | 29.4 | 16.6 | 0.7 | 440 | | X | eTU0245 |
| S6207L | S6207L TUBE | 32.6 | 32.6 | 11 | 6.7 | 0.7 | 550 | | X | eTU0246 |
| SMA C | SMA C TUBE | 10.1 | 10.1 | 22.4 | 11.6 | 0.7 | 590 | | X | eTU0248 |
| SPM A | SPM A TUBE | 12.4 | 12.4 | 29.8 | 12.2 | 0.7 | 580 | | | eTU0250 |
| 3-912107-0 | 3-912107-0 TUBE | 15.9 | 15.9 | 31.7 | 13.8 | 0.8 | 540 | | X | eTU0251 |



CONNECTOR (Continued)

| Package | ePAK P/N | A | B | C | H | T | L | Pin | Plug | Code |
|-------------|------------------|--------|--------|--------|--------|-------|-------|-----|------|---------|
| C5G | C5G TUBE | 7.2 | 7.2 | 12.5 | 7.3 | 0.6 | 508 | | X | eTU0252 |
| C5H | C5H TUBE | 7.1 | 7.1 | 13.5 | 8.4 | 0.6 | 520 | | X | eTU0253 |
| 8-912075-2 | 8-912075-2 TUBE | 30.3 | 30.3 | 41.2 | 20.1 | 1.0 | 574 | | X | eTU0267 |
| MG060-5500 | MG060-5500 TUBE | 17.5 | 17.5 | 14.5 | 9.5 | 0.5 | 550 | | X | eTU0270 |
| E-67910-001 | E-67910-001 TUBE | 2.7 | 5.3 | 10.6 | 8.8 | 0.6 | 560 | | X | eTU0271 |
| 1447070-6 | 1447070-6 TUBE | 30.5 | 30.5 | 42.0 | 42.0 | 0.8 | 700 | | X | eTU0272 |
| 3-1447231-6 | 3-1447231-6 TUBE | 27.0 | 30.5 | 37.0 | 27.5 | 0.8 | 700 | | X | eTU0273 |
| 3-1447231-7 | 3-1447231-7 TUBE | 27.0 | 27.0 | 29.0 | 29.0 | 0.8 | 700 | | X | eTU0274 |
| 4-912107-5 | 4-912107-5 TUBE | 31.5 | 31.5 | 27.3 | 21.6 | 0.8 | 508 | | X | eTU0278 |
| 4-912107-8 | 4-912107-8 TUBE | 23.1 | 23.1 | 17.15 | 11.85 | 0.7 | 500 | | | eTU0279 |
| 4-912107-9 | 4-912107-9 TUBE | 10.35 | 10.35 | 27.9 | 22.6 | 0.7 | 500 | | | eTU0280 |
| 4-912107-0 | 4-912107-0 TUBE | 26.9 | 26.9 | 22.2 | 16.9 | 0.7 | 500 | | | eTU0281 |
| 4-912107-1 | 4-912107-1 TUBE | 15.3 | 15.3 | 27.1 | 22.4 | 0.8 | 500 | | | eTU0282 |
| 4-912107-2 | 4-912107-2 TUBE | 26.9 | 26.9 | 24.8 | 19.5 | 0.7 | 500 | | | eTU0283 |
| 4-912107-3 | 4-912107-3 TUBE | 18 | 18 | 27.9 | 22.6 | 0.7 | 500 | | | eTU0284 |
| 4-912107-4 | 4-912107-4 TUBE | 28.2 | 28.2 | 24.8 | 19.5 | 0.7 | 500 | | | eTU0285 |
| 4-912107-5 | 4-912107-5 TUBE | 33.0 | 33.0 | 32.0 | 26.8 | 0.8 | 508 | | X | eTU0286 |
| 4-912107-6 | 4-912107-6 TUBE | 23.3 | 23.3 | 37.4 | 32.7 | 0.8 | 500 | | | eTU0287 |
| 4-912107-7 | 4-912107-7 TUBE | 19.2 | 19.2 | 27.9 | 22.6 | 0.7 | 500 | | | eTU0288 |
| 3S-950057 | 3S-950057 TUBE | 6.400 | 6.400 | 46.800 | 23.000 | 0.800 | 660.0 | | | eTU0292 |
| MCK0007 | MCK0007 TUBE | 12.000 | 12.000 | 7.500 | 3.100 | 0.600 | 520.0 | | | eTU0298 |



TUBE TOOLING

CONNECTOR (Continued)

| Package | ePAK P/N | A | B | C | H | T | L | Pin | Plug | Code |
|------------|-----------------|-------|-------|-------|-------|------|-------|-----|------|---------|
| P1-35H | P1-35H TUBE | 25.00 | 20.60 | 8.70 | 8.70 | 0.70 | 508 | | X | eTU0291 |
| S600L | S600L TUBE | 27.00 | 23.50 | 15.10 | 7.80 | 0.80 | 550 | | X | eTU0293 |
| SPF48 | SPF48 TUBE | 13.00 | 13.00 | 5.00 | 2.60 | 0.50 | 550 | | | eTU0302 |
| 2-912107-9 | 2-912107-9 TUBE | 47.60 | 47.60 | 35.60 | 16.50 | 1.20 | 508 | | X | eTU0310 |
| 9-912058-3 | 9-912058-3 TUBE | 7.30 | 7.30 | 9.85 | 8.35 | 0.60 | 508 | | | eTU0313 |
| 9-912058-4 | 9-912058-4 TUBE | 7.30 | 7.30 | 9.85 | 8.35 | 0.60 | 508 | | | eTU0314 |
| 9-912058-5 | 9-912058-5 TUBE | 7.30 | 7.30 | 14.00 | 12.50 | 0.60 | 508 | | | eTU0315 |
| 9-912058-6 | 9-912058-6 TUBE | 7.30 | 7.30 | 14.00 | 12.50 | 0.60 | 508 | | | eTU0316 |
| 6-912107-2 | 6-912107-2 TUBE | 32.90 | 32.90 | 21.30 | 14.80 | 0.80 | 500 | | | eTU0317 |
| 6-912107-3 | 6-912107-3 TUBE | 13.30 | 13.30 | 37.70 | 32.90 | 0.80 | 500 | | | eTU0318 |
| 5-912107-8 | 5-912107-8 TUBE | 18.29 | 18.29 | 15.85 | 11.45 | 0.60 | 508 | | X | eTU0319 |
| 6-912107-0 | 6-912107-0 TUBE | 20.79 | 20.79 | 19.60 | 15.20 | 0.60 | 508 | | X | eTU0320 |
| 230-0878 | 230-0878 TUBE | 15.75 | 15.75 | 7.62 | 4.83 | 0.80 | 533.4 | | X | eTU0325 |
| SRW16ES-V | SRW16ES-V TUBE | 20.40 | 26.80 | 20.90 | 5.00 | 0.70 | 506 | | | eTU0326 |
| HPC0927 | HPC0927 TUBE | 9.40 | 9.40 | 24.80 | N/A | 0.70 | 500 | | | eTU0337 |
| 40D89521N | 40D89521N TUBE | 5.30 | 5.30 | 9.50 | 4.60 | 0.50 | 560 | | | eTU0338 |
| SG-9 20A | SG-9 20A TUBE | 9.10 | 9.10 | 27.80 | N/A | 0.60 | 261 | | | eTU0339 |
| 6-912107-7 | 6-912101-7 TUBE | 16.70 | 16.70 | 21.85 | 18.80 | 0.80 | 575 | | X | eTU0343 |
| 6-912107-9 | 6-912107-9 TUBE | 26.50 | 26.50 | 35.50 | N/A | 1.00 | 545 | | X | eTU0348 |
| 8-912079-4 | 8-912079-4 TUBE | 28.00 | 28.00 | 19.10 | 16.80 | 0.70 | 590 | | X | eTU0349 |



CONNECTOR (Continued)

| Package | ePAK P/N | A | B | C | H | T | L | Pin | Plug | Code |
|------------|-----------------|-------|-------|-------|-------|------|-------|-----|------|---------|
| 4-912077-5 | 4-912077-5 TUBE | 28.00 | 28.00 | 19.10 | 16.80 | 0.70 | 570 | | X | eTU0350 |
| 912059-5 | 912059-5 TUBE | 6.90 | 6.90 | 9.85 | 8.35 | 0.60 | 508 | | X | eTU0351 |
| 912059-6 | 912059-6 TUBE | 7.30 | 7.30 | 9.85 | 8.35 | 0.60 | 508 | | X | eTU0352 |
| 912059-7 | 912059-7 TUBE | 6.90 | 6.90 | 9.85 | 8.35 | 0.60 | 508 | | X | eTU0353 |
| 912059-8 | 912059-8 TUBE | 7.30 | 7.30 | 9.85 | 8.35 | 0.60 | 508 | | X | eTU0354 |
| 9-912074-6 | 9-912074-6 TUBE | 13.70 | 13.70 | 23.29 | 18.29 | 0.70 | 508 | | X | eTU0356 |
| 7-912107-3 | 7-912107-3 TUBE | 27.00 | 27.00 | 14.90 | 11.90 | 0.70 | 508 | | X | eTU0360 |
| 7-912107-4 | 7-912107-4 TUBE | 23.60 | 23.60 | 16.00 | 10.40 | 0.70 | 500 | | X | eTU0361 |
| 7-912107-6 | 7-912107-6 TUBE | 20.79 | 20.79 | 19.60 | 15.20 | 0.60 | 508 | | X | eTU0362 |
| 48-005 | 48-005 TUBE | 9.00 | 9.00 | 10.20 | 6.90 | 0.50 | 600 | | X | eTU0363 |
| 48-004 | 48-004 TUBE | 3.90 | 3.90 | 13.00 | 9.00 | 0.50 | 600 | | X | eTU0364 |
| 48-003 | 48-003 TUBE | 7.00 | 7.00 | 11.20 | N/A | 0.50 | 600 | | X | eTU0365 |
| 48-006 | 48-006 TUBE | 9.00 | 9.00 | 11.20 | 7.20 | 0.50 | 600 | | X | eTU0366 |
| 48-007 | 48-007 TUBE | 5.30 | 5.30 | 12.80 | 9.10 | 0.50 | 600 | | X | eTU0367 |
| 230-0885 | 230-0885 TUBE | 26.67 | 20.32 | 24.76 | 12.57 | 1.00 | 534.4 | | X | eTU0368 |
| CIT12-C | CIT12-C TUBE | 16.45 | 11.05 | 13.50 | N/A | 0.63 | 508.0 | | X | eTU0369 |
| 2-912107-6 | 2-912107-6 | 13.70 | 13.70 | 23.29 | 18.29 | 0.70 | 508.0 | | X | eTU0370 |
| 48-009 | 48-009 TUBE | 12.50 | 12.50 | 7.40 | 3.80 | 0.50 | 600 | | X | eTU0372 |
| 48-008 | 48-008 TUBE | 12.50 | 12.50 | 10.00 | 6.40 | 0.50 | 600 | | X | eTU0373 |



CONNECTOR (Continued)

| Package | ePAK P/N | A | B | C | H | T | L | Pin | Plug | Code |
|-----------------|----------------------|-------|-------|-------|-------|------|-----|-----|------|---------|
| 9-912074-5 | 9-912074-5 TUBE | 9.95 | 9.95 | 23.29 | 18.29 | 0.70 | 508 | | X | eTU0374 |
| 48-002 | 48-002 TUBE | 9.00 | 9.00 | 9.40 | 7.80 | 0.50 | 600 | | X | eTU0376 |
| 7-912107-7 | 7-912107-7 TUBE | 31.40 | 27.70 | 25.50 | 19.00 | 0.70 | 500 | | X | eTU0381 |
| 8-912107-6 | 8-912107-6 TUBE | 58.90 | 58.90 | 29.50 | 21.90 | 1.10 | 508 | | | eTU0402 |
| 8-912107-2 | 8-912107-2 TUBE | 22.20 | 22.20 | 18.00 | 13.10 | 0.70 | 508 | | X | eTU0403 |
| 230-0893 | 230-0893 TUBE | 21.46 | 21.46 | 21.34 | 17.53 | 0.80 | 533 | | X | eTU0408 |
| LD03-1 | LD03-1 TUBE | 9.00 | 9.00 | 8.00 | 4.50 | 0.60 | 570 | | | eTU0423 |
| WINDOW KNOB | WINDOW KNOB TUBE | 30.00 | 30.00 | 22.20 | 14.60 | 1.00 | 790 | | X | eTU0424 |
| MIRROR KNOB | MIRROR KNOB TUBE | 34.00 | 34.00 | 17.50 | 8.50 | 1.00 | 790 | | X | eTU0425 |
| SELECTOR KNOB | SELECTOR KNOB TUBE | 47.60 | 47.60 | 16.10 | 12.50 | 1.00 | 790 | | X | eTU0426 |
| SRW16ES-H | SRW16ES-H TUBE | 16.90 | 16.90 | 20.30 | 11.50 | 0.70 | 505 | | X | eTU0434 |
| 8-912107-7 | 8-912107-7 TUBE | 25.50 | 25.50 | 15.00 | 7.00 | 0.70 | 508 | | X | eTU0436 |
| PJK-651-1 STICK | PJK-651-1 STICK TUBE | 14.50 | 14.50 | 9.00 | 6.00 | 0.70 | 625 | | | eTU0437 |
| 10042920-03-001 | 10042920-03-001 TUBE | 38.00 | 38.00 | 24.50 | 20.45 | 1.00 | 610 | | X | eTU0438 |
| 1446-1YY0056 | 1446-1YY0056 TUBE | 18.50 | 18.50 | 19.00 | 8.40 | 0.70 | 762 | X | | eTU0774 |
| 1446-1YY0057 | 1446-1YY0057 TUBE | 20.30 | 20.30 | 19.00 | 8.40 | 0.70 | 762 | X | | eTU0775 |
| 1446-1YY0058 | 1446-1YY0058 TUBE | 22.30 | 22.30 | 19.00 | 8.40 | 0.70 | 762 | X | | eTU0776 |
| 6-912120-4 | 6-912120-4 | 51.40 | 51.40 | 42.40 | 36.40 | 1.00 | 508 | | X | eTU0782 |

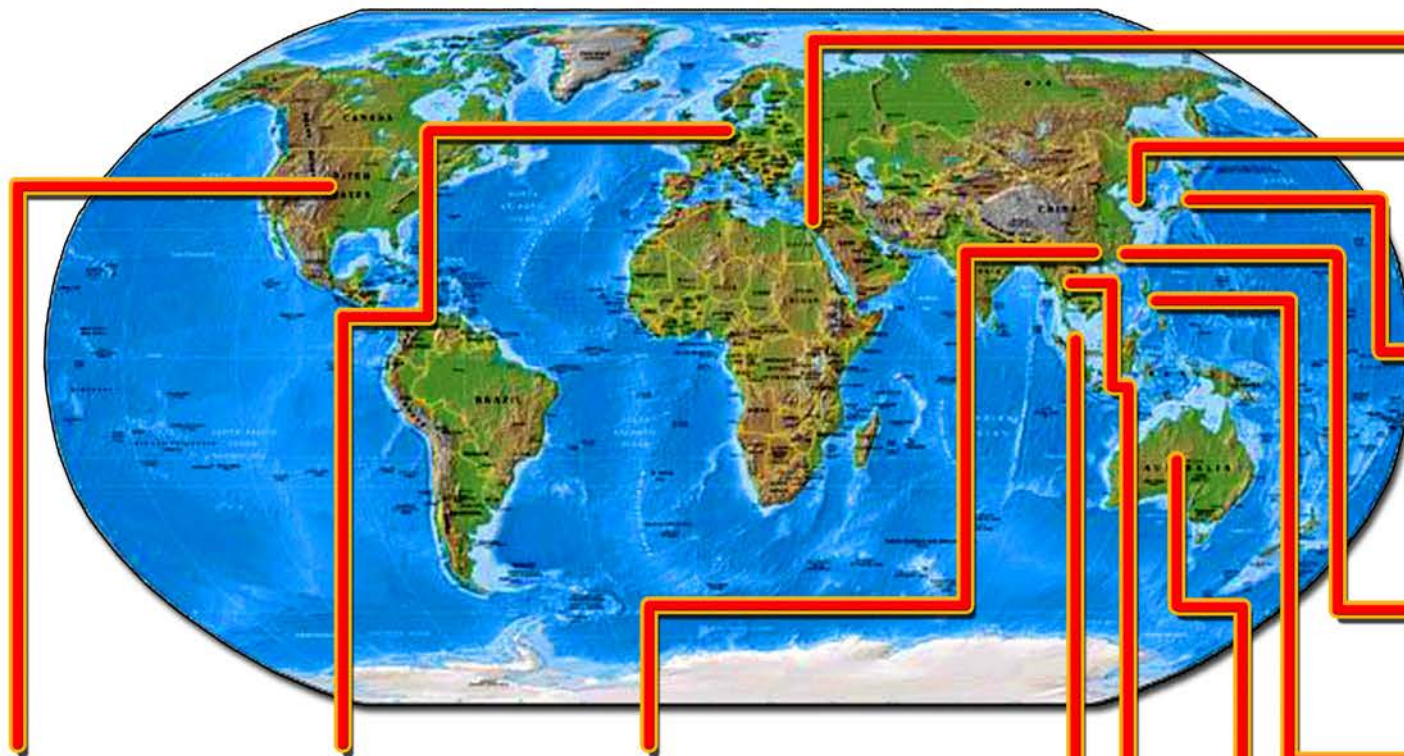


TUBE TOOLING

CONNECTOR (Continued)

| Package | ePAK P/N | A | B | C | H | T | L | Pin | Plug | Code |
|---------------------|----------------------|--------|-------|-------|-------|------|-----|-----|------|---------|
| CSS5012-7R01E | CSS5012-7R01E | 8.30 | 8.30 | 5.20 | 4.40 | 0.60 | 600 | | X | eTU0784 |
| 95 9300 8071 10 175 | 95 9300 8071 10 175 | 18.90 | 13.85 | 18.80 | 15.80 | 0.70 | 800 | | X | eTU0791 |
| 95 9300 8071 10 176 | 95 9300 8071 10 176 | 30.90 | 13.85 | 18.80 | 15.80 | 0.70 | 800 | | X | eTU0792 |
| 5-912120-8 | 5-912120-8 | 47.70 | 47.70 | 33.00 | 26.10 | 1.10 | 508 | | X | eTU0793 |
| 6-912120-6 | 6-912120-6 | 50.00 | 47.00 | 13.40 | 11.40 | 1.10 | 508 | | X | eTU0794 |
| 6-912120-8 | 6-912120-8 TUBE | 42.60 | 42.60 | 36.40 | 22.90 | 1.00 | 574 | | X | eTU0795 |
| MOTOR ASS'Y | MOTOR ASS'Y TUBE | R5.1mm | | | | 0.60 | 385 | | X | eTU0802 |
| 42K-004E089 | 42K-004E089 TUBE | 12.30 | 12.30 | 27.00 | 15.20 | 0.75 | 610 | | X | eTU0806 |
| 7-912120-3 | 7-912120-3 TUBE | 15.70 | 15.70 | 30.40 | 24.40 | 0.70 | 508 | | X | eTU0817 |
| 7-912120-3 | 7-912120-3 TUBE | 30.40 | 24.40 | 15.70 | 15.70 | 0.70 | 508 | | x | eTU0817 |
| 1-912143-7 | 1-912143-7 TUBE | 27.00 | 23.90 | 16.60 | 16.60 | 0.90 | 575 | | x | eTU0818 |
| 1446-9BB0001-01 | 1446-9BB0001-01 tube | 20.50 | 20.50 | 37.50 | 28.50 | 0.80 | 573 | | x | eTU0823 |
| EHS | EHS tube | 19.00 | 19.00 | 9.00 | 7.70 | 0.60 | 435 | | x | eTU0825 |
| MCK0002 | MCK0002 tube | 10.00 | 10.00 | 3.20 | 1.70 | 0.60 | 500 | | x | eTU0826 |
| FJEXAIO016 | FJEXAIO016 TUBE | 19.80 | 19.80 | 17.10 | 15.60 | 0.75 | 470 | | | eTU0828 |
| CSS5305-1201ESZ | CSS5305-1201ESZ tube | 8.10 | 6.00 | 4.30 | 3.30 | 0.50 | 600 | | x | eTU0831 |
| E12 | E12 tube | 14.60 | 10.60 | 21.50 | 16.40 | 0.70 | 505 | | | eTU0849 |
| 230-1129 | 230-1129 TUBE | 13.60 | 10.00 | 20.80 | 16.20 | 0.60 | 530 | | x | eTU0850 |
| 230-1137 | 230-1137 tube | 11.30 | 11.30 | 21.00 | 16.80 | 0.65 | 520 | | x | eTU0858 |
| B71-2090 | B71-2090 tube | 11.90 | 11.40 | 10.60 | 7.80 | 0.60 | 603 | | | eTU0860 |
| 230-1140 | 230-1140 TUBE | 16.25 | 16.25 | 18.00 | 13.30 | 0.65 | 500 | | x | eTU0865 |





M.Y.G. Tech
Israel
Phone: +972-8 9760620
Fax: +972-8-9760621

ePAK Korea
Seoul, Korea
Phone: +822-401-2627
Fax: +822-401-2618

Kangawa Shoji
Japan Head Office:
Phone: (81) 936610360
Fax: (81) 936618552
Hong Kong Office:
Phone: +852-2380-0196
Fax: +852-2380-1050

ePAK Taiwan
Taipei, Taiwan
Phone: +886-2-291-49591
Fax: +886-2-291-49597

ePAK Philippines
Manila, Philippines
Phone: +63-908-815-8322
Land: +63-49-302-5812

NSI(Thailand) Co., Ltd.
Thailand
Phone: 02-663-3070-2
Fax: 02-663-3073

MMRC Pty Ltd.
Australia
Phone: +61-3-9885-1752
Fax: +61-3-9885-2603

ePAK International, Inc.
Austin, Texas, U.S.A.
Phone: +1-512-231-8083
Fax: +1-512-231-8183

SPS-Europe
Europe
Phone: +31 341 360590
Fax: +31 341 360589

ePAK Solutions (SZ) Co.,Ltd.
ePAK Technologies (SZ) Co.,Ltd.
Shenzhen, China
Phone: +86-755-3382-7888
Fax: +86-755-2862-1452

ePAK Resources (S) Pte Ltd.
Singapore
Phone: +65-6846-9908
Fax: +65-6547-4269

Litetrionics (S) Pte Ltd.
Singapore
Phone: +65-6842-7889
Fax: +65-6842-7229

Koike (M) Sdn Bhd
Malaysia
Phone: +603-31763923
Fax: +603-31763923

Jas Pak (S) Pte., Ltd.
Thailand
Phone: +65 6481 0045
Fax: +65 6483 0045

